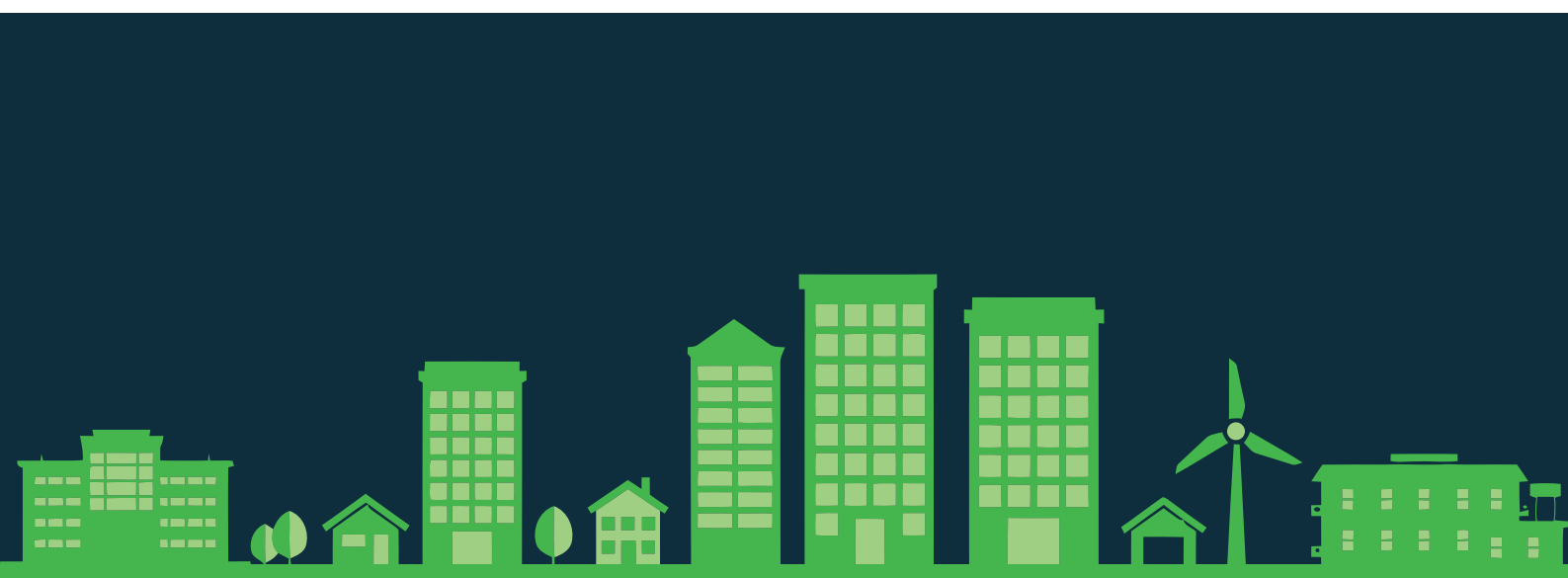




# Water Calculation Checklist

---

January 2018



Call us today on 01525 303 905  
to speak with an adviser or visit  
[aptsoundtesting.co.uk](http://aptsoundtesting.co.uk)

\*please fill in the green boxes

Installation Type	Unit	Capacity / Flow Rate	Number in Dwelling	Guidance Notes
WC (single flush)	Flush volume (litres)			Enter the flushing volume of the WC in litres and the number of WCs in the dwelling. If no single flush WCs are installed please leave cells blank and fill in the details for dual flush WCs.
WC (dual flush)	Flush volume (litres)			Enter the full flush and part flush flushing volumes of the WC in litres and the number of WCs in the dwelling. If no dual flush WCs are installed please leave cells blank and fill in the details for single flush WCs.
	Part volume (litres)			
Taps (excluding kitchen/utility room taps)	Flow rate (litres/minute)			Enter the flow rate of these taps, at full flow rate in litres per minute and the number of these taps in the dwelling. Taps on baths should not.
Bath	Capacity to overflow (litres)			Enter the total capacity of the bath to overflow, in litres and the number of baths.
Shower	Flow rate (litres/minute)			Enter the flow rate of each shower at the outlet using cold water in litres per minute and the number of showers in the dwelling.
Kitchen/utility room sink taps	(Litres/kg dry load)			Enter the flow rate of these taps, at full flow rate in litres per minute and the number of these taps in the dwelling. Taps on baths should not.
Washing machine	(Litres/place setting)			Enter the litres per kilogram of dry load from the figure quoted on the EU Energy Label. Where no washing machine is to be provided and therefore consumption figures are unknown, a default figure of 8.17 litres per kilogram will be used.
Dishwasher	(Litres/kg dry load)			Enter the litres per place setting from the figure quoted on the EU Energy Label. Where no dishwasher is to be provided and therefore consumption figures are unknown, a default figure of 1.25 litres per place setting will be used.

Additional Questions	Yes / No	Guidance Notes
Is a waste water disposal unit installed in the dwelling?		Enter yes or no. Where present, a standard consumption of 3.08 litres per person per day will be used.
Is a water softener installed in the dwelling?		Enter yes or no. If yes additional information will be requested to complete the calculation.
Is a grey water recycling system installed in the dwelling?		Enter yes or no. If yes additional information will be requested to complete the calculation. Grey water recycling systems recycles bath and shower water for reuse in the dwelling such as WC flushing.
Is a rainwater recycling system installed in the dwelling?		Enter the total capacity of the bath to overflow, in litres and the number of baths.